



# SRI RAMACHANDRA

INSTITUTE OF HIGHER EDUCATION AND RESEARCH

(Category - I Deemed to be University) Porur, Chennai

## SRI RAMACHANDRA FACULTY OF AUDIOLOGY & SPEECH LANGUAGE PATHOLOGY



# ADMISSIONS OPEN 2023 - 24

### Details of UG & PG Programmes



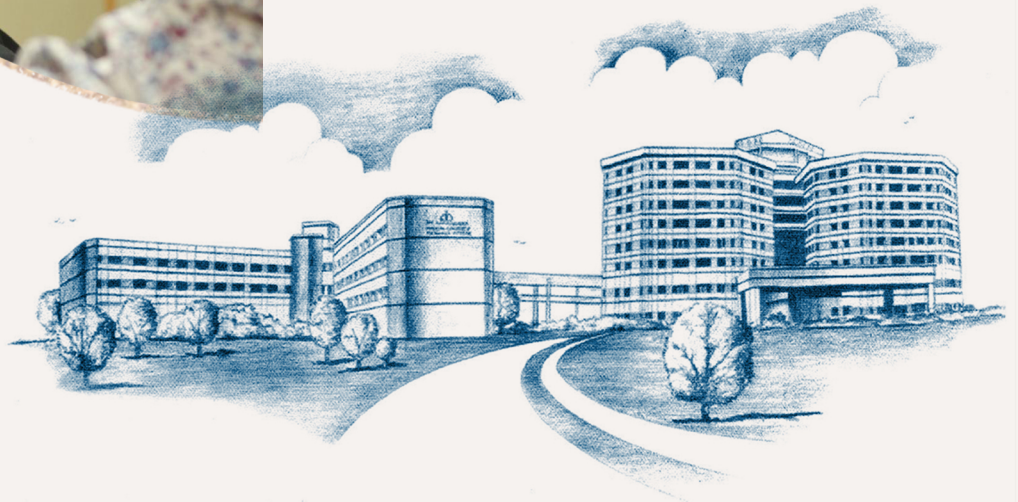
Accredited by  
National Assessment and  
Accreditation Council  
with 'A++' Grade  
(CGPA 3.53 on 4 Point Scale)



NABH Accredited  
Tertiary Hospital



ज्ञान-विज्ञान विमुक्तये  
Graded as Category-I  
University by thr UGC



website: [www.sriramachandra.edu.in](http://www.sriramachandra.edu.in)

# Sri Ramachandra

## Faculty of Audiology & Speech Language Pathology

Audiology and Speech Language Pathology services commenced on 5th October, 1995 as an adjunct to the ENT- HNS department in the hospital and in the Faculty of Allied Health Sciences in the university. The degree program was recognized by Rehabilitation Council of India (RCI) in 1998. In 2000, the facility was established as an independent Department in the university. Subsequent to completion of the Silver Jubilee in 2020, the department was recognized as an independent faculty by the board of management of SRIHER (DU). Sri Ramachandra Faculty of Audiology and Speech Language Pathology (SRFASLP) was instituted on 23rd June, 2022. Currently, the Faculty (SRFASLP) has two departments under it namely, Department of Audiology and Department of Speech Language Pathology.

SRFASLP have been actively engaged in academic and clinical teaching for professional training in the field of Audiology and Speech Language Pathology (ASLP). It has also been providing clinical services for a wide spectrum of persons with hearing and communication disorders across all age groups. Research and outreach-community activities are the department's other priority areas.

Clinical services reach out to persons with hearing and communication disorders transcending social, lingual, economic and cultural diversities. These services are provided at various locations inside the campus at the Sri Ramachandra Medical Centre, Sri Ramachandra Hospital, Sri Ramachandra Rehabilitation Centre (SRRC), Sri Ramachandra Hearing Aid Centre, Vidyasudha - Sri Ramachandra Learning Centre for Children with Special Needs and at Smt. Kamalam Ramasamy Health Sciences block to over 35,000 patients per year. Clinics are well equipped with sophisticated instruments providing state of the art clinical services (diagnostics & therapy) in the field of ASLP. The department has played a pioneering role in setting standards in clinical practice within the subspecialties of cleft lip and palate, voice, community-based rehabilitation, tele-practice, hearing screening, tinnitus, swallowing intervention in neonatal intensive care units, stroke units and oncology-rehabilitation, early child development and parent empowerment.

SRFASLP offers a student-cantered multidimensional approach with blended learning focuses on the acquisition of knowledge and skills required to practice as a professional in the field. Nationally renowned and experienced faculty members with academic achievements and prestigious fellowships such as the Fulbright Fellowship and other esteemed awards serve on the team. Alumni graduating as ASLP professionals are well placed nationally and internationally, and pursue higher education or are employed in recognized clinical/academic centres across the globe. SRFASLP boasts a 100% placement record over the last several years.

### ☸ Scope of Practice

Hospitals, Schools, Private clinics, University and Teaching colleges and Entrepreneurs.

For more details on the Scope of practices of ASLP Kindly visit the Indian Speech and Hearing Association website (Link: [https://www.ishaindia.org.in/pdf/Scope\\_of\\_Practice.pdf](https://www.ishaindia.org.in/pdf/Scope_of_Practice.pdf))

For more information contact:

[principal.srfaslp@sriramachandra.edu.in](mailto:principal.srfaslp@sriramachandra.edu.in)

## SRI RAMACHANDRA FACULTY OF AUDIOLOGY & SPEECH LANGUAGE PATHOLOGY

Sl. No	NAME OF THE PROGRAM	PROGRAM - WRITEUP
<b>UNDERGRADUATE PROGRAM</b>		
1	B.ASLP	<p>The RCI recognized course (B. ASLP) is a four-year programme (8 semesters) with a blend of graded academics and clinical curriculum.</p> <p>Students spend nearly 50% of their time in clinical areas and are mandated by the RCI to complete 10 months clinical internship as a part of the programme.</p> <p>Recruiters: BMR Health (California, USA), Episource (USA), JOGO (New Delhi) and several other National teaching, research and clinical institutes.</p>
<b>POSTGRADUATE PROGRAM</b>		
2	M.Sc. (Audiology)	<p>Full-time four semester programme that blends theory, clinics and research. Coursework provides comprehensive, specialized and in-depth training in all aspects of Audiology. The curriculum provides ample opportunities for developing skills in critical thinking, integrated research, and evidence-based practice &amp; scientific writing, in addition to course related Audiology.</p> <p>Recruiters: Eljay clinic (Chennai), Aanvi Hearing (Pan India), Sonava India Pvt. Ltd</p>
3	M.Sc. (Speech Language Pathology)	<p>Full-time four semester programme that blends theory, clinics and research. Course work provides comprehensive, specialized and in-depth training in all aspects of Speech Language Pathology. The curriculum provides ample opportunities for developing skills in critical thinking, integrated research, and evidence-based practice &amp; scientific writing, in addition to courses related to Speech Language Pathology.</p> <p>Recruiters: BMR Health (USA), JOGO (New Delhi), Chaitanya (New Delhi), Ed Theory (USA), Ascend Rehab (USA)</p>

# DEPARTMENT OF SPEECH LANGUAGE PATHOLOGY



Video Stroboscopy  
Voice Assessment



Breathing Assessment  
for Speech



Neonatal Feeding in ICUs



Speech Therapy



Post Stroke Language  
Assessment and Treatment



Group Therapy



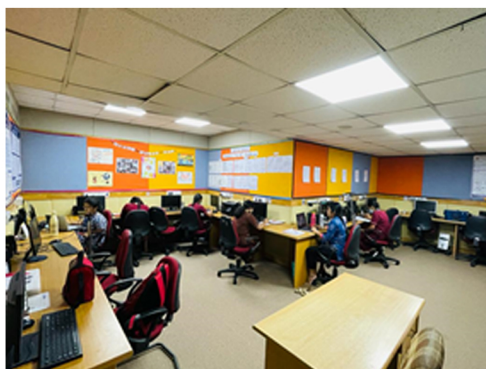
Public information Dissemination



Parent Empowerment Program



Patient Counselling



Acoustic Voice Analysis Lab



Tele-rehabilitation



Play Observation

# DEPARTMENT OF AUDIOLOGY



Pure Tone Audiometry  
Hearing Assessment



Otoscopic Ear Examination



Tuning Fork Test



Neonatal Hearing Screening



Hearing aid Trial and Fitting (Adults)



Visual Reinforcement Audiometry  
for testing hearing in toddlers



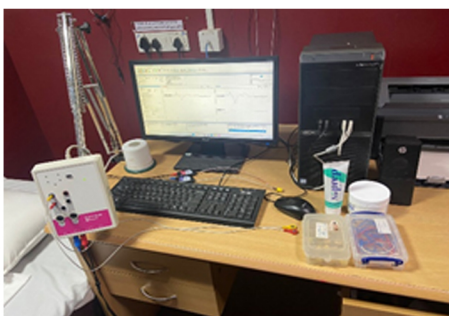
Hearing aid Fitting for Children



Patient Counselling



Aural rehabilitation



Electrophysiological  
Test Equipment



SRESHT Lab



Hearing Screening Camps  
at Special schools



Cleft Camp – Information  
Dissemination



Noise awareness for  
school students

## STUDENT ACTIVITIES



Tuning Fork Test



Tuning Fork Test



Tuning Fork Test



Tuning Fork Test



Tuning Fork Test



Tuning Fork Test



Together We Help people with Communication Difficulties